

Trail's Edge Apartments

Appleton's Newest Apartment Homes



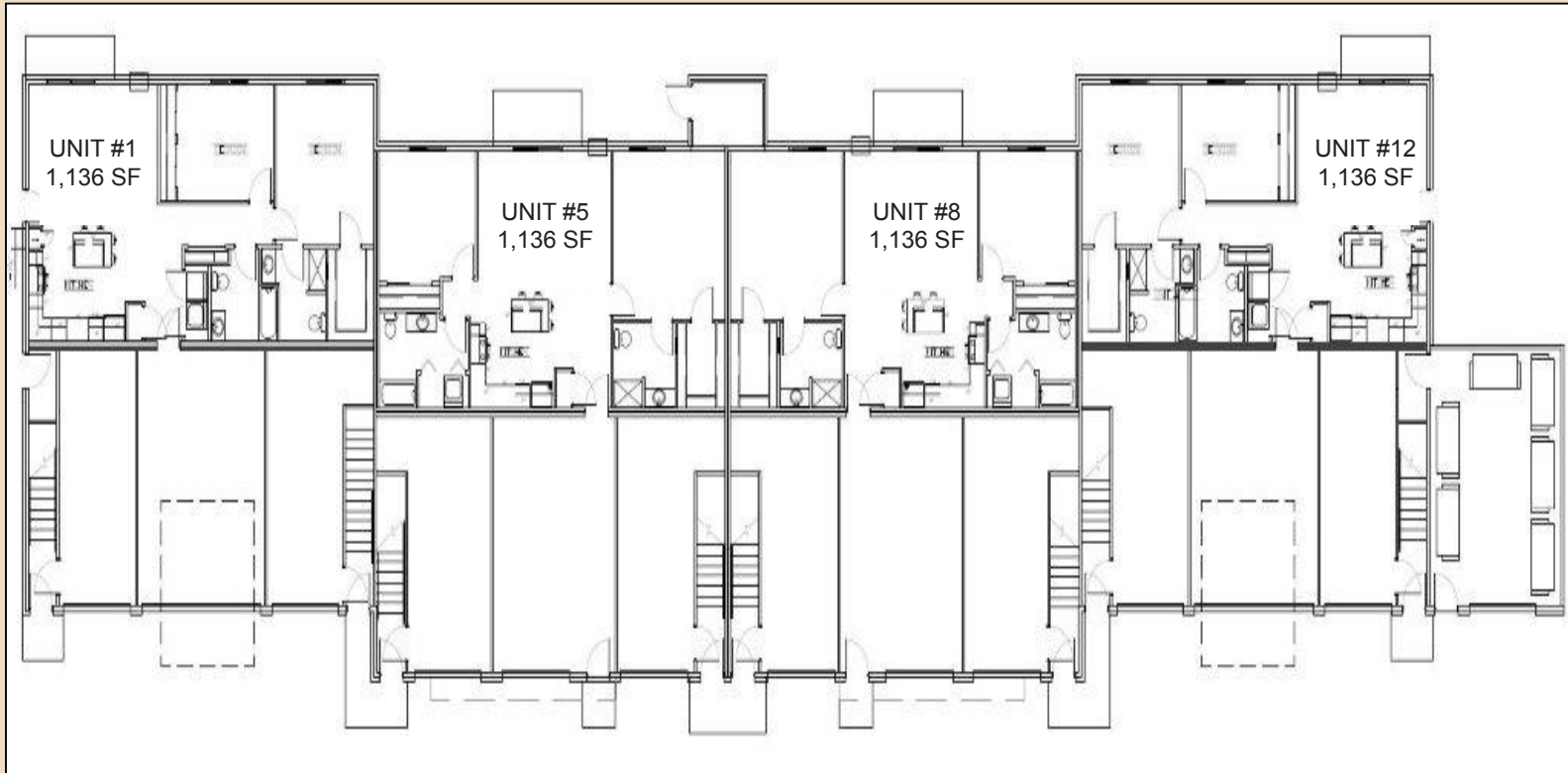
Special Features

- *Located adjacent to Apple Creek Trail*
- *AT&T Fiber Optic Services*
- *2 Bedroom/2 Bathroom*
- *Open Concept/Vaulted Ceilings*
- *Washer/Dryer*
- *Air Conditioning*
- *Smoke Free*
- *Walk-in Closets*
- *Attached Garages*
- *Easy Access to Interstate 41*



4312-4326 Lightning Drive
Appleton, WI 54913

For more information on
Trail's Edge Apartments,
please call 920.730.4284



First Floor Plan

Units 1 and 12 - \$1,095.00 per Month / Heat and water included

- 2 Bedrooms, 2 Bathrooms
- Approximately 1,136 SF
- Attached 2-car garage
- Security Deposit ■ \$1,095.00

Units 5 and 8 - \$995.00 per Month / Heat and water included

- 2 Bedrooms, 2 Bathrooms
- Approximately 1,136 SF
- Attached 1 ½ - car garage
- Security Deposit ■ \$995.00

4312-4326 Lightning Drive
Appleton, WI 54913



Second Floor Plan

Units 2 and 11 - \$975.00 per Month / Heat and water included

- 2 Bedrooms, 2 Bathrooms / Attached 1-car garage
- Approximately 1,136 SF / Security Deposit ■ \$975.00

Units 3 and 10 - \$950.00 per Month / Heat and water included

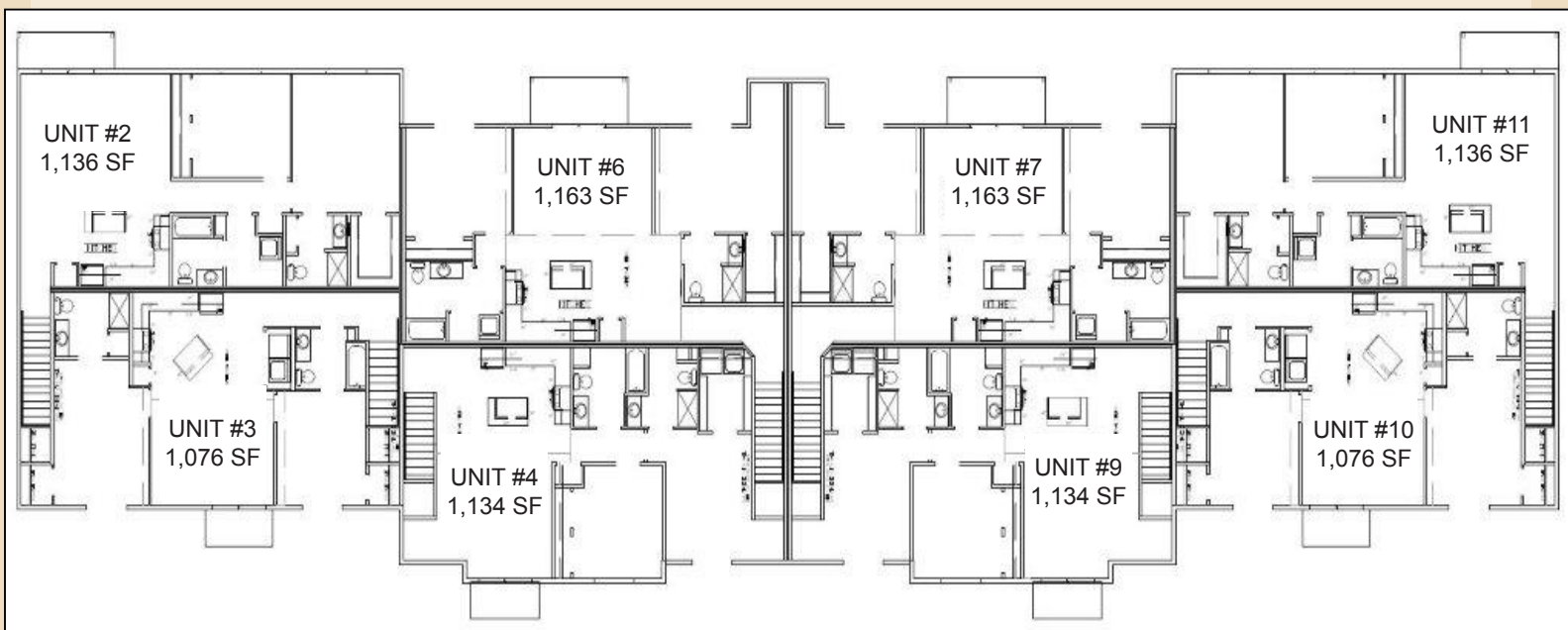
- 2 Bedrooms, 2 Bathrooms / Attached 1-car garage
- Approximately 1,076 SF / Security Deposit ■ \$950.00

Units 4 and 9 - \$950.00 per Month / Heat and water included

- 2 Bedrooms, 2 Bathrooms / Attached 1-car garage
- Approximately 1,134 SF / Security Deposit ■ \$950.00

Units 6 and 7 - \$995.00 per Month / Heat and water included

- 2 Bedrooms, 2 Bathrooms / Attached 1-car garage
- Approximately 1,136 SF / Security Deposit ■ \$995.00



4312-4326 Lightning Drive
Appleton, WI 54913

Trail's Edge Apartments

Appleton's Newest Apartment Homes

Floor Plan Amenities

- Cable & Fiber Optics
- Bathtub/Shower
- Dishwasher/Garbage
- Disposal/Refrigerator
- Stainless Steel Appliances
- Kitchen with Island
- Microwave and Oven
- Carpeting/Vinyl Flooring
- Window Coverings
- Balcony or Patio

Pet Policy

- Cats Allowed (2 cat limit)
- Must be spayed/neutered
- One Time Pet Fee: \$200 (cats only)
- Monthly Cat Rent: \$50 for 1 cat/\$75 for 2



MANAGEMENT
YOUR PROPERTY. OUR RESPONSIBILITY.

200 E. Washington Street, Suite 2B
Appleton, WI 54911
Main: 920.730.4284 / Fax: 920.730.4286

www.pfefferle.biz



4312-4326 Lightning Drive
Appleton, WI 54913